

# UTTARAKHAND RURAL

All analysis based on data from 13 out of 13 districts

## Enrollment

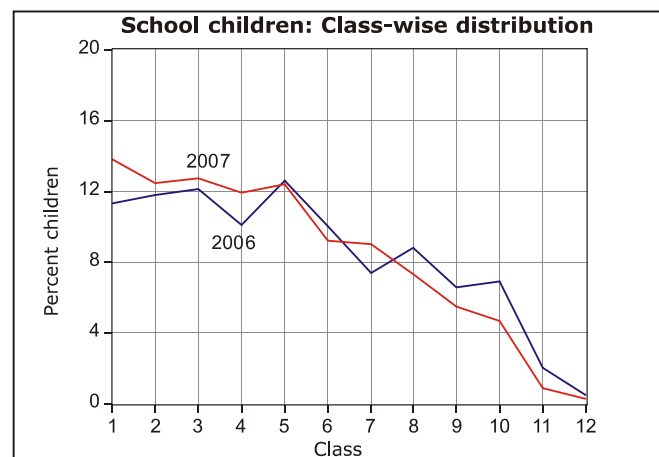
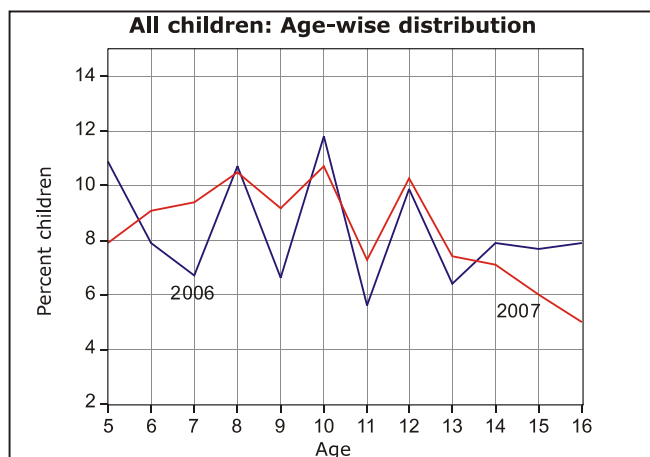
### School enrollment and out of school children 2006 vs. 2007

	2006					2007				
	% Children in each age group in different types of schools				% Out of school	% Children in each age group in different types of schools				% Out of school
	Govt.	Pvt.	Other (Madarsa + EGS)	Not in School	Total	Govt.	Pvt.	Other (Madarsa + EGS)	Not in School	Total
Age: 6 -14 ALL	75.9	21.0	0.8	2.4	100	71.9	25.0	0.9	2.2	100
Age: 7-16 ALL	76.4	18.5	0.8	4.3	100	72.8	22.5	0.8	4.0	100
Age: 7- 10 ALL	75.4	22.0	0.8	1.9	100	70.9	26.8	1.0	1.3	100
Age: 7-10 BOYS	73.7	23.9	0.7	1.7	100	67.7	30.0	1.1	1.2	100
Age: 7-10 GIRLS	77.4	19.6	1.0	2.1	100	74.8	23.0	0.8	1.4	100
Age: 11-14 ALL	78.4	17.9	0.7	3.1	100	74.9	20.8	0.6	3.7	100
Age: 11-14 BOYS	76.0	20.4	0.7	2.8	100	72.7	23.5	0.5	3.3	100
Age: 11-14 GIRLS	81.4	14.6	0.6	3.4	100	77.3	17.8	0.8	4.1	100
Age: 15-16 ALL	75.0	11.7	1.0	12.3	100	73.1	12.1	0.5	14.3	100
Age: 15-16 BOYS	75.6	12.2	0.9	11.3	100	71.6	15.3	0.5	12.7	100
Age: 15-16 GIRLS	74.0	11.0	1.2	13.8	100	74.8	8.7	0.6	16.0	100

Note: "Not in school" includes children who have never gone to school or have dropped out.

## Age and Class

### Age-wise and class-wise distribution of children in sample



## Young Children

### In pre-school (Balwadi/Anganwadi) or in school 2006 vs. 2007

	2006					2007						
	In balwadi or anganwadi	% Children			Not going anywhere	Total	In balwadi or anganwadi	% Children			Not going anywhere	Total
		Govt.	Pvt.	Other School				Govt.	Pvt.	Other School		
Age: 3 ALL	59.2				40.8	100	74.8				25.2	100
Age: 4 ALL	80.2				19.8	100	77.8				22.2	100
Age: 5 ALL	32.5	26.9	13.0	0.6	27.0	100	19.0	45.7	28.1	1.5	5.7	100
Age: 6 ALL	6.5	63.1	27.0	1.0	2.5	100	1.9	63.6	32.0	1.1	1.5	100

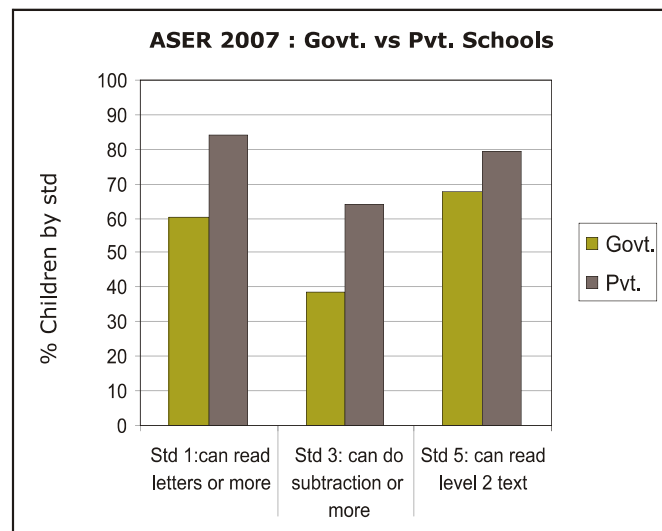
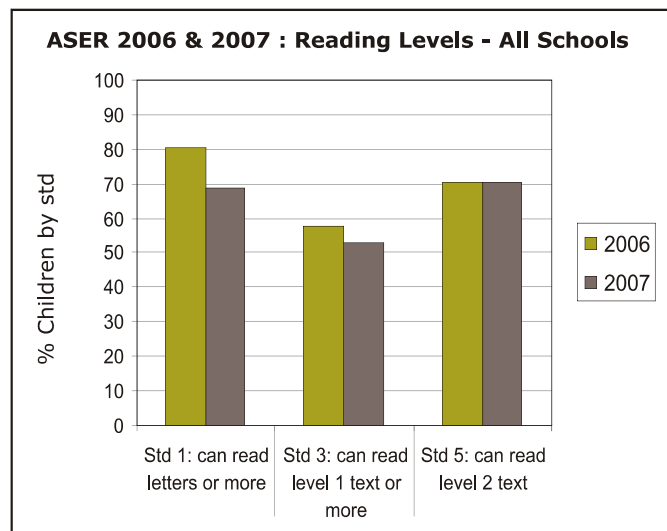
## Learning Level

Reading level: % Children who can read						
Std.	Nothing	Letter	Word	Level 1 (Std 1) Text	Level 2 (Std 2) text)	Total
I	31.2	42.3	17.4	4.1	5.1	100
II	9.4	30.1	37.5	12.6	10.4	100
III	3.3	13.5	30.4	26.1	26.7	100
IV	1.2	7.0	17.4	27.8	46.6	100
V	1.1	2.7	7.5	18.3	70.4	100
VI	0.3	1.8	3.2	10.5	84.3	100
VII	0.2	1.0	1.0	8.3	89.5	100
VIII	0.3	1.2	1.2	5.3	92.0	100
<b>Total</b>	<b>7.0</b>	<b>14.4</b>	<b>16.3</b>	<b>14.8</b>	<b>47.6</b>	<b>100</b>

Arithmetic level: % Children who can						
Std.	Nothing	Recognize Numbers		Subtract	Divide	Total
		1-9	10-99			
I	29.4	40.1	22.3	3.4	4.8	100
II	10.9	31.1	40.3	10.4	7.3	100
III	4.0	17.0	34.0	29.5	15.6	100
IV	1.3	10.0	20.6	34.9	33.2	100
V	0.8	4.3	12.1	29.5	53.3	100
VI	0.3	2.3	8.4	23.4	65.6	100
VII	0.2	1.7	5.2	17.2	75.8	100
VIII	0.2	1.2	3.2	14.8	80.6	100
<b>Total</b>	<b>7.0</b>	<b>15.4</b>	<b>20.1</b>	<b>20.4</b>	<b>37.1</b>	<b>100</b>

Only subtraction and division data comparable with previous ASER.

## Comparisons



English reading level: % Children who						
Std.	Cannot read capital letters	Can read capital letters	Can read small letters	Can read simple words	Can read easy sentences	Total
I	45.1	27.9	13.1	6.7	7.2	100
II	22.7	34.3	21.5	12.2	9.4	100
III	12.8	24.4	22.1	21.5	19.2	100
IV	5.7	16.0	20.6	31.4	26.4	100
V	3.4	9.8	12.8	32.7	41.3	100
VI	2.1	4.1	8.9	25.8	59.0	100
VII	1.8	3.0	5.7	19.6	69.9	100
VIII	1.4	1.3	3.7	16.5	77.1	100
<b>Total</b>	<b>13.7</b>	<b>17.0</b>	<b>14.6</b>	<b>20.7</b>	<b>34.1</b>	<b>100</b>

English comprehension		
Std.	Of those who can read words, % who can tell meaning of the words	Of those who can read sentences, % who can tell meaning of sentences
I	67.2	83.7
II	61.0	87.5
III	61.6	81.4
IV	62.6	84.4
V	66.5	87.8
VI	71.6	85.8
VII	68.0	84.4
VIII	71.9	87.0
<b>Total</b>	<b>65.7</b>	<b>85.6</b>

## Comprehension & Problem solving

### Ability of children by reading level to read and answer orally

Children in age group : 6 to 10				Children in age group : 11 to 14			
Reading level	% Children in specific reading level	% at each level who can orally answer questions		Reading level	% Children in specific reading level	% at each level who can orally answer questions	
		based on Std 1 level text only	based on Std 2 level text			based on Std 1 level text only	based on Std 2 level text
Word	23.7	7.2	4.2	Word	4.7	25.6	12.8
Std 1 level text	17.8	64.8	17.3	Std 1 level text	11.5	69.5	25.8
Std 2 level text	31.1	91.5	83.2	Std 2 level text	80.3	95.6	91.6

### Ability of children by age to listen to a subtraction problem and answer

In-school children			
Age group	% Children who can solve		
	None	Simple problem only	Both problems
6 to 8	69.7	5.5	23.5
9 to 10	33.9	8.2	56.5
11 to 14	13.3	6.6	79.1

Children not in-school			
Age group	% Children who can solve		
	None	Simple problem only	Both problems
6 to 8	90.3	1.0	8.7
9 to 10	78.6	0.0	21.4
11 to 14	53.3	5.1	40.6

लाजो के पास एक माला है। उसमें बहुत सारे मोती हैं। मोती पीले रंग के हैं। लाजो उसे पहनती है।

राजू का एक भाई और एक बहन है। बड़ा भाई शहर में रहता है। वह बड़े विद्यालय में पढ़ता है। वह बहुत मेहनती है। उसकी बहन अच्छी खिलाड़ी है। उसे कई खेल बहुत अच्छी तरह खेलने आते हैं। राजू उन दोनों की तरह बनना चाहता है। पढ़ाई में तेज़ होना चाहता है और अच्छा खिलाड़ी भी बनना चाहता है।

प्र.1 मोती किस रंग के हैं?  
प्र.2 लाजो के पास क्या है?

प्र.3 राजू का बड़ा भाई कहां रहता है?  
प्र.4 राजू किस-किस की तरह बनना चाहता है?

(1) आपके पास 50 रुपये हैं। आपने उसमें से 45 रुपये के कपड़े खरीदे। अब आपके पास कितने रुपये बचे हैं?

(2) आपके पास 50 रुपये हैं। आपने उनमें से 37 रुपये की सब्जी खरीदी। अब आपके पास कितने रुपये बचे हैं?

### Ability of children by arithmetic level to listen to a subtraction problem and answer

Children in age group : 6 to 10				
Arithmetic level	% Children in specific arithmetic level	% Children in specific arithmetic level who can solve		
		None	Simple problem only	Both problems
Number recognition 10-99	27.6	76.0	9.1	13.4
Subtraction	21.8	29.2	11.7	56.3
Division	22.1	5.6	3.2	91.0

Children in age group : 11 to 14				
Arithmetic level	% Children in specific arithmetic level	% Children in specific arithmetic level who can solve		
		None	Simple problem only	Both problems
Number recognition 10-99	8.6	59.5	14.8	23.7
Subtraction	21.1	17.5	12.2	67.9
Division	66.0	2.0	4.0	93.5

### School going children attending tuition class

Std.	% Children							
	I	II	III	IV	V	VI	VII	VIII
Govt. school	3.6	4.8	3.8	4.8	4.3	5.1	3.5	8.8
Pvt. school	13.1	17.9	21.3	18.5	19.3	20.7	26.4	24.6



**School Observations:** Schools visited - Primary (Std 1-4/5): 306; Primary+Upper-primary (Std 1-8): 14

Teacher attendance	2005		2007	
	Std. 1-4/5	Std. 1-8	Std. 1-4/5	Std. 1-8
% teachers attending (average)	75.6	92.9	92.1	97.2
% schools with no teacher present	8.7	0.0	0.4	0.0
% schools with all teachers present	54.1	80.0	81.4	91.7

Children's attendance	2005		2007	
	Std. 1-4/5	Std. 1-8	Std. 1-4/5	Std. 1-8
% enrolled children attending (average)	86.2	87.5	85.6	90.1
% schools with less than 50% enrolled children attending	2.7	0.0	4.7	7.1
% schools with 75% and more enrolled children attending	84.6	92.9	79.0	85.7

Pupil teacher ratio (median)	2005		2007	
	Std. 1-4/5	Std. 1-8	Std. 1-4/5	Std. 1-8
Based on children enrolled & teachers appointed	33.5	23.8	27.5	33.0
Based on children & teachers present	39.5	20.0	26.5	22.9

School grants and teacher grants	2006		2007*	
	Std. 2	Std. 4	Std. 2	Std. 4
	% Schools			
Teacher received TLM grant	87.4	86.4	82.7	81.5
School received school maintenance grant	93.7		76.4	

Water/toilet and midday meal	2005		2007	
	Std. 1-4/5	Std. 1-8	Std. 1-4/5	Std. 1-8
	% Schools			
Schools with no water provision	24.9	20.0	21.3	0.0
Schools with water provision but water not available	6.5	6.7	9.8	7.1
Schools with water provision and water available	68.6	73.3	68.9	92.9
Schools with no toilet provision	25.7	14.3	9.0	0.0
Schools with toilet provision but not being used	19.3	28.6	16.3	21.4
Schools with toilet provision and use	55.1	57.1	74.7	78.6
Schools with midday meal being served on that day	84.7	73.3	98.0	92.9

Multigrade classes	2007	
	Std. 1-4/5	Std. 1-8
Schools in which...	% Schools	
Std II class sits with another class	68.5	61.5
Std IV class sits with another class	61.5	69.2

Over 90% classes that were visited have blackboards. In over 90% of these classes, most children have textbooks, notebooks and pen or pencil.

Please note that while 2005 data was collected during ASER 2005, 2006 data reported in the Grants table was collected in ASER 2007 by asking for last year's grant information to the respondent.

Note: ASER 2007 survey was carried out in October and November 2007. One govt. school with primary grades was visited in the sampled village. If there was more than one govt. school with primary grades, then the school with the highest enrollment was visited. Hence the schools visited in the survey do not represent a random sample from the district. The school visits were generally done either on a Saturday or a Monday.

Handwritten calculations:

$$\begin{array}{r} 45 \\ -18 \\ \hline 27 \end{array}$$

$$8)983(122$$

$$\begin{array}{r} -8 \\ \hline 18 \\ 16 \\ \hline \times 23 \\ \hline 16 \\ \hline \times 7 \end{array}$$

$$\begin{array}{r} 74 \\ -56 \\ \hline 18 \end{array}$$

\*Grants for 2007 may be lower than 2006 since the survey was conducted in the middle of the year.

### Performance of districts

District	Pre- school	Out of school	Private school	Std 1-2 : Learning levels			Std 3-5 : Learning levels		
	% Children (Age 3-4) in Anganwadi or other pre-school	% Children (Age 6-14) Out of school	% Children (Age 6-14) in Private school	% Children (Std 1-2) who CAN READ letters, words or more in OWN LANGUAGE	% Children (Std 1-2) who CAN RECOGNIZE NUMBERS (1-9) or more	% Children (Std 1-2) who CAN READ letters or more in ENGLISH	% Children (Std 3-5) who CAN READ Level 1 (Std 1) text or more in OWN LANGUAGE	% Children (Std 3-5) who CAN SUBTRACT or do more	% Children (Std 3-5) who CAN READ sentences in ENGLISH
Uttarkashi	79.1	1.3	20.7	76.5	77.2	61.4	68.3	61.9	21.7
Chamoli	87.5	0.3	8.6	84.6	87.5	74.1	72.8	71.3	40.3
Rudraprayag	71.1	0.3	16.9	85.0	82.3	73.7	75.4	69.6	24.8
Tehri Garhwal	66.7	0.8	20.5	75.4	68.8	45.0	75.1	63.7	15.1
Dehradun*		2.6	33.1	74.5	75.7	63.2	67.6	56.0	39.9
Pauri Garhwal	84.4	0.7	22.2	82.4	87.6	73.7	78.1	71.1	35.8
Pithoragarh	89.3	1.1	18.8	78.4	75.7	56.5	77.1	67.3	35.4
Bageshwar	64.4	1.6	21.8	89.2	87.9	75.5	79.3	69.0	52.2
Almora	61.0	0.4	13.0	76.3	73.0	69.4	72.0	65.4	18.3
Champawat	52.9	0.8	13.1	80.6	81.0	73.6	84.7	77.5	41.4
Nainital*		2.1	20.5	84.0	86.8	77.4	81.7	77.9	67.7
Udham Singh Nagar	76.7	6.8	30.4	79.2	81.2	60.9	62.3	60.2	18.0
Haridwar	92.6	3.5	43.3	76.4	78.2	66.7	63.7	58.1	16.6
<b>Total</b>	<b>76.2</b>	<b>2.2</b>	<b>25.0</b>	<b>79.2</b>	<b>79.4</b>	<b>65.6</b>	<b>71.7</b>	<b>65.1</b>	<b>28.9</b>



\* Blank cells indicate insufficient data.